



AAUW California

AAUW Fund Event

October 23, 2022



Welcome and Introductions



Karen Vanderwerken
Director
Chair, AAUW California Fund
Committee



Sandi Gabe
AAUW California President



Katrina Sun Breese
AAUW Senior Director of
Institutional Advancement

Yi Yi Mon (Rosaline) Kyo

Career
Development
Grant



**(Pre)Occupied Artists: Collectivity,
Ethnicity, and Space in
Representing Tibetan Subjects,
1960-2008**

*Davidson College
Art History*

Book Project

The Peripheries of Empire: Art Workers in Tibet in the People's Republic of China, 1960-2008

- Examine how state artists were integral actors in the creation of myths regarding Tibet's history, people, customs and future.
- Four Major Art Projects
 - Painters (Dong Xiwen, Wu Guanzhong, and Shao Jingkun) sent to Tibet in the early 1960s
 - Film crew creating major motion picture *Nongnu* (1962)
 - Sculptors constructing the large life-sized sculptural installation *Wrath of the Sefs* (1975)
 - Chen Danqing's *Tibet Group* series of realist paintings
- Three Main Goals
 - Reconsider how artworks developed during the Maoist period (1949-1976) continued, rather than broke, the chain of Chinese modern artistic development since the late 19th century
 - Uncover the ways in which race and ethnicity, as well as national space, continue to be constituted through visual representations
 - Analyze how the conceptual shift towards defining artists as “art workers” impacted subsequent development of Chinese arts in the 20th century and beyond





Left: Shao Jingkun (邵晶坤), Female Factory Worker, Oil painting (45.5 x 60.5 cm)

Center: Still from Serf (Nongnu 农奴), dir. Li Jun, 1963.

Right: Wrath of the Serfs, sculptural installation, 1976.



Left: Chen Danqing (陈丹青),
Tibet Series, 1980-82. Go To
Town II, oil on canvas.

Right: Tsewang Tashi (Tib.
ཚེངས་ལྷ་མོ་འཕྲུལ་པ་ལྷ་མོ་; Ch.次旺
扎西), Shangri-la Series, #1
(性格里拉 #1), 2008 (150 x 100
cm, digital photograph;
photograph courtesy of
Tsewang Tashi).



Project Design

- Case studies that span different decades from 1960 to the 2000s
- Artists from different generations (pre-socialist, socialist, and post-socialist artistic training)
 - Allows for an understanding of the impact of political ideology on artistic output
 - Allows for an understanding of the impact of political ideology on how “ethnic minorities” are depicted
- Artists that work in different mediums
 - Allows for a broader understanding of how the concept of artist shifted to “art worker”



Research Methodology

- Primary sources from
 - Archives
 - Museum collections
 - Newspaper databases
 - Popular Pictorial magazines
 - Films
 - Artist interviews



Timeline Towards Publication

- Submit book manuscript for review (fall 2022)
- Receive feedback from reviewers (late spring 2023)
- Revise and resubmit manuscript (May and June 2023) with the **support of the AAUW Short-Term Publication Grant**



Greta Casino M.S.W.

Community
Development Grant



Advocating for Better Health and
Well-being of Individuals and Families
to Overcome Challenges in our
Communities and Social Systems

*Loma Linda University
Social Work*



Career
Development
Grant

Greta Casino

Clinical Social Work



LOMA LINDA UNIVERSITY SCHOOL OF
BEHAVIORAL HEALTH



Our Communities
Need Social Workers
Now
More Than Ever

Research for Effective Practices

Community-
Centered Clinical
Practice Model

Trauma and
Resiliency-
Informed Care
Approach

Community
Resiliency
Model

Culturally
Grounded
Approach



Advance Clinical Practice

Evidence-based Practices for Psychotherapy + Mindfulness Practices

Brianna Banks-McLean, M.Arch

Selected
Professions



An Interdisciplinary Approach to Modern Design Diversification

University of California, Berkeley
Architecture and design

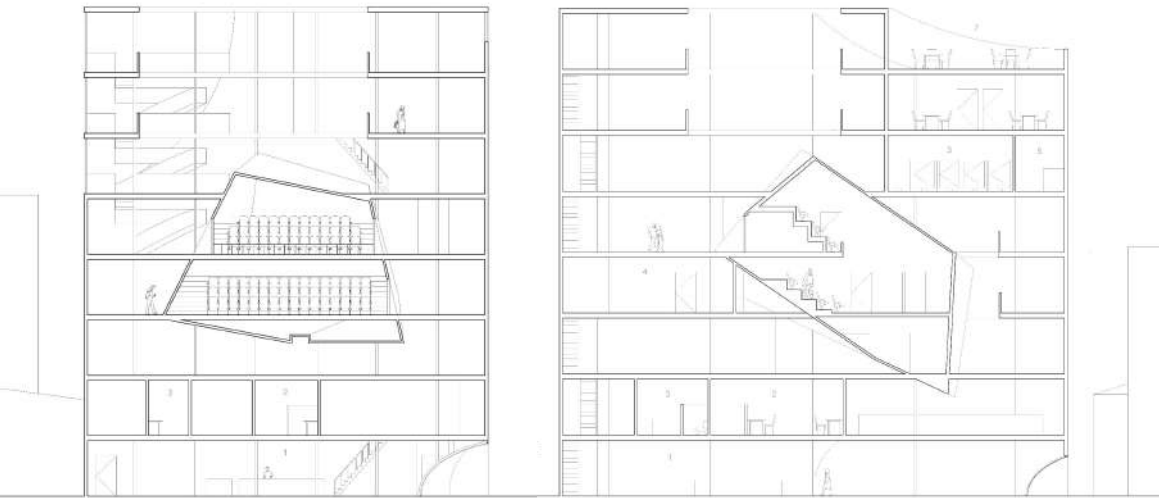
masters of architecture: program overview

- An emerging position in the application of digital-design media.
- Studios and seminars that embrace an international perspective.
- A continued commitment to our emphasis on design and ecology.
- These three frameworks, together with a tradition of outstanding scholarship in architectural history and theory, offer new directions for architectural education that transcend traditional disciplinary boundaries.

learning outcomes

- Cultivating an intrinsic logic of space, structure, and material, which define the language and syntax of form.
- Exploring the extrinsic of architecture and its various social, intellectual and cultural contexts through engagement of site, programs, and users.
- Experience first hand the tension and complexity of form while providing a broad understanding of uses of representation that shape architecture.
- Using that understanding to thoughtfully design solutions to present architectural contestations.

community center for the arts regional auditorium



key

- 1. lobby
- 2. office
- 3. meeting room

section - transverse

scale: 1/8" = 1'-0"

north

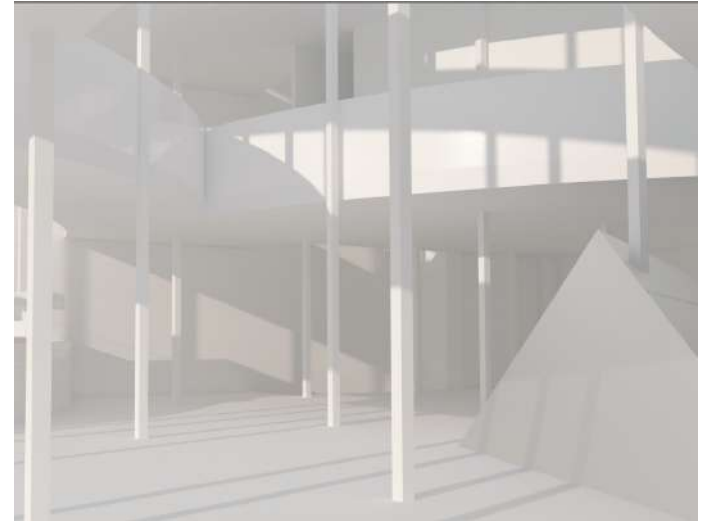
key

- 1. lobby
- 2. office
- 3. bathroom
- 4. rehearsal
- 5. kitchen
- 6. community room
- 7. patio and open gallery

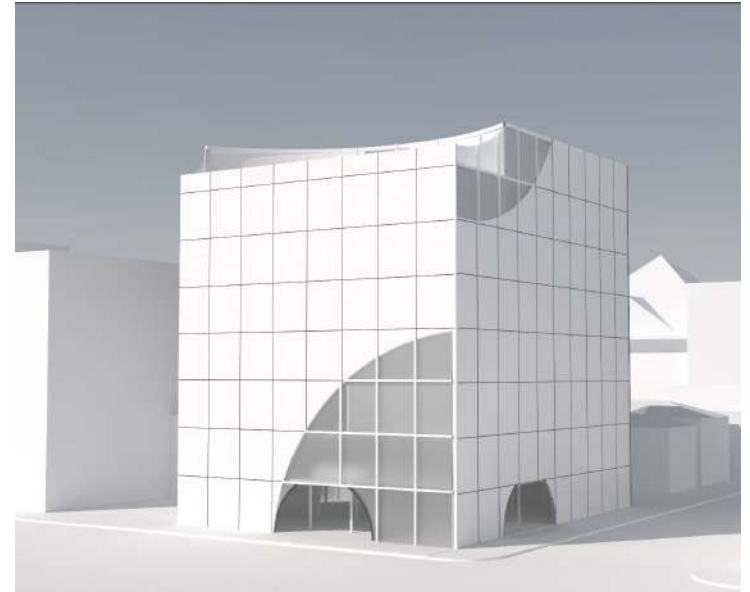
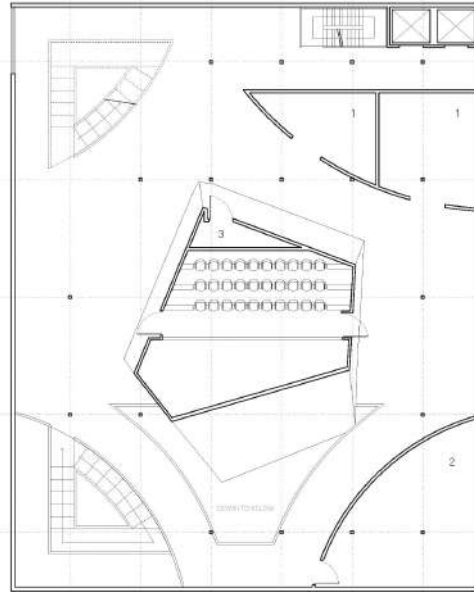
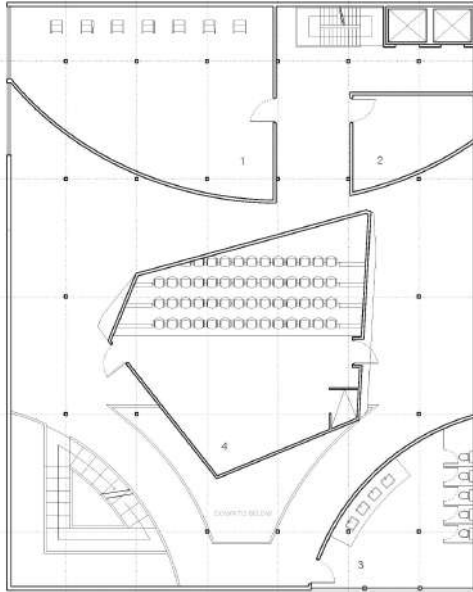
section - longitudinal

scale: 1/8" = 1'-0"

north



community center for the arts regional auditorium



key

- 1_rehearsal
- 2_dressing room
- 3_bathroom
- 4_stage

plan - floor 4

scale: 3/32" = 1'-0"



key

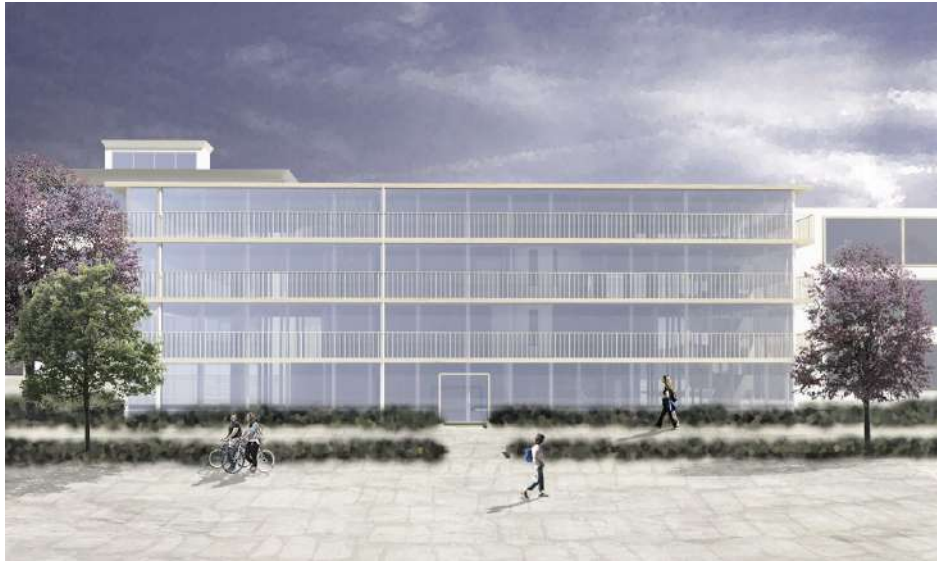
- 1_concessions
- 2_storage
- 3_media room

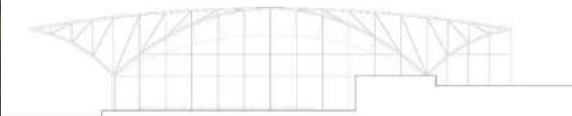
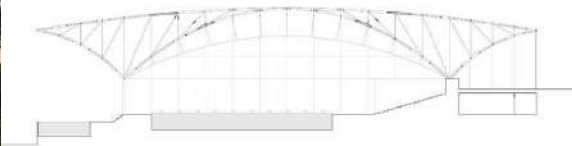
plan - floor 5

scale: 3/32" = 1'-0"

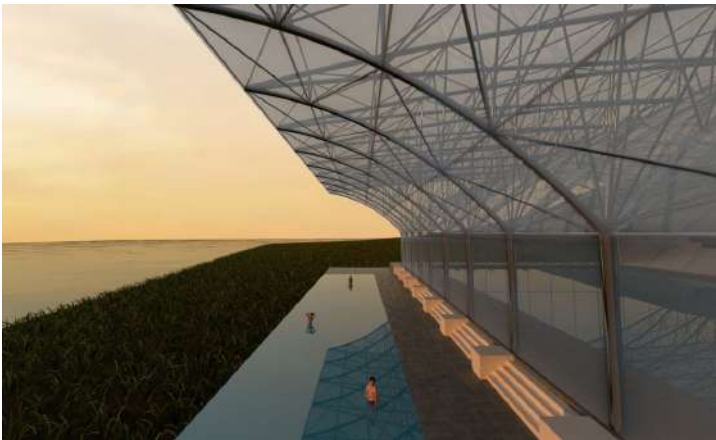


mixed-use city market

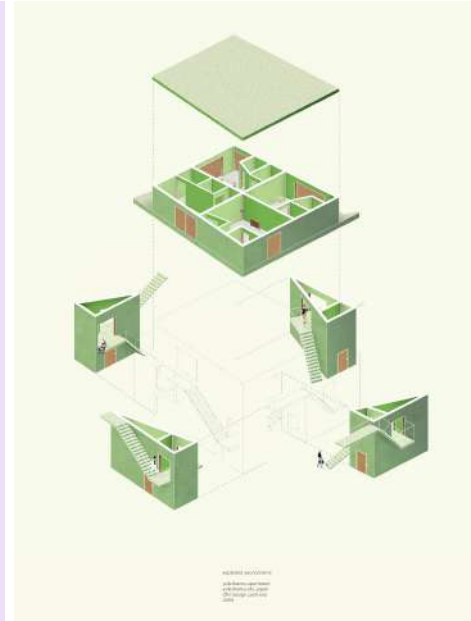




swimming pavilion
(a reimagining of
the sutro baths)



digital architectural redesign – yokohama apartments, japan



continued study and dissertation

- architectural values of community, interdisciplinary design, and diversification of design perspectives
- current work: socioeconomic and political industrialization of community and corporation within oakland, california
- dissertation and beyond: foster ideals around holistic, sustainable, and equitable architectural framework at the political and capitalist levels

Christiane Assefa, Ph.D.

American
Fellowship



Mapping Lifemaking: Race, Place, and Refugees in “America’s Finest City”

University of California, San Diego
American studies

My Research Project

- My dissertation research is fundamentally concerned with a question about the politics of knowledge production - Who can produce knowledge? How? Why?
- My project centers the Knowledge Production of East African Refugee Communities in San Diego
- I theorize “lifemaking” as a gendered spatial practice enacted by East African refugees that contests the racialized landscape of “America’s Finest City”
- Lifemaking centers the intimate and everyday lives of the community
- I study lifemaking at three distinct scales: the community center, neighborhood, and coalition



Image Source: [KPBS](#)

Collaborative and Accountable Community Based Oral History Project

- This chapter relies on a set of 12 oral histories conducted with members of the San Diego Refugee Communities Coalition
- The work emerged from ongoing conversations with a member of the SDRCC about what accountable community based research looks like
- The coalition invited me to conduct oral histories in an effort to document their emergence, coalitional model, and the work that they had done during the pandemic
- The primary purpose of this collaborative research project was to serve the interests of the coalition. The oral histories were used to support their grassroots organizing work.
- With their consent, the findings of this research project inform the third chapter of my dissertation and an essay based on this work will be published in *The Routledge Handbook of Refugee Narratives* in 2023.



The San Diego Refugee Communities Coalition

- 23k refugees resettled in SD since 2009
- Collective of ethnic community-based organizations (ECBOs)
- Est. 2019 to ensure refugee communities are healthy, safe, and thriving
- Leads a coordinated approach to collectively reduce health and socioeconomic disparities among diverse refugee communities
- Members: 11 ECBOs representing Haitian, Karen, Iraqi, Syrian, Kurdish, Chaldean, Afghani, Palestinian, Ethiopian, Eritrean, Somali Bantu, Somali, South Sudanese, and Sudanese refugee communities



SAN DIEGO
Refugee Communities
COALITION



Black-led, Feminist Refugee Coalition Building

- Drawing from oral histories conducted with the coalition, I will share definitions of community health that inform their organizing model
- The narratives and definitions of community health that emerge from a refugee-led coalition such as the SDRCC is an important site of knowledge production
- These narratives are guided by a vision for a future in which all people are treated with care and dignity - and really expand what health and community health mean.



Image Source: [Immigrants are Welcome Here](#)

Three Key Elements

- Three Key Elements define the SDRCC feminist, refugee model enacted by the coalition and inform their capacity to directly meet the needs of refugee families in San Diego

I. Shared Understanding

II. Desire to Take Collective Action

III. Collaborative, Participatory Decision Making Model

- The broad, multi-issue approach reflects the diverse set of expertise each member organization brings to the coalition
- Ultimately, the unique model of the SDRCC redefines community health



I. The SDRCC Model: Shared Understanding

- The member-leaders have a shared understanding of the lived experiences and needs of refugees and refugee families
- Members of the coalition recognize forced displacement as an ongoing process, rather than a singular event or something defined by legal status/recognition
- SDRCC members recognize how the refugee experience is shaped by different historical and social processes, such as Islamophobia and anti-Black Racism.
- Rather than approaching their work as a single-issue struggle, the broad array of work led by member organizations displays the breadth of the refugee experience.



II. The SDRCC Model: Desire to Take Collective Action

- While each EBCO organizes individual programs and initiatives, they recognize the power in joining forces to collectively meet the material needs of their community.
- Members of the coalition recognize that the problems faced by their communities are not individual failings, but a result of larger social and political issues
- The SDRCC creates a space in which refugees are empowered to collectively organize and provide the basic needs for their own communities in their own language, religious and cultural background
- The coalition exists as a site of autonomy and leadership for refugees committed to serving their communities, making an impact, and develop their leadership.



III. The SDRCC Model: Collaborative, Participatory Decision Making Model

- Because of shared understanding and values, all decisions are rooted in a desire to give primacy to the interests and needs of refugees and refugee families, not the individual interest of an organization or member leader
- Humble work space environment, reliable, present
- Mentoring - the goal is not for everyone to be an expert at all things, but that the skills of different orgs complement one another and build toward share goals and growth
- Consensus driven decision making
- There are regular meetings where proposals emerge, are discussed, modified, and finalized



Redefining Community Health

- The SDRCC model reimagines community health
- Shifts away from narratives that locate solutions for racial disparities and inequities in health care explicitly within the hands of healthcare providers and institutions by locating impacted community as drivers for solution and transformation for the most pressing needs of vulnerable communities
- Further, the SDRCC model is a site of knowledge production where racialized ideas of refugees are being contested, and refugees are both re-imagining and building a way of co-existence defined by collaboration and care.



Health is....

*"When I go home, I don't have to think about that I'm gonna be homeless. Do you know what I mean? **I wanna go home and I don't wanna be attacked for being a Muslim when walking on city of Main Street. I wanna be accepted. Health mean...this small city, the mayor, the school, the businesses, all together has to work in a good system. And I have to be part of that system in order to balance those things.**"*



Health is....

"...it's not just about when you're sick you get a place to get help, but also every single moment of your life, you have support, like emotional support, and someone you can rely on....[and] if you have a tie to your own culture or heritage, and then if you can embrace, you can keep your own culture in this new country, and then you feel proud of your own culture. That is very important part of your health, and then important part of your wellness."



Health is...

“...the agency to make choices in life and the agency to fulfill your full potential. And I think that's at the forefront of our work. The reason we want equity and the reason we want access is so that our community members can live the lives that they want for themselves and that they're able to live up to their full potential, whatever that looks like. I think at the heart of it [community health] is the political agency. That you as an individual in relation to your community are making decisions for yourself and you're empowered to pursue the things you want to pursue.”



Mrinmoyee Bhattacharya, Ph.D.

American
Fellowship



Creolizing Universalism and Postcolonial Citizenship

*University of California, Irvine
European Studies*

My background

- Literary and Cultural Studies scholar
 - In this book manuscript, I explore the relationship between migration, memory, emotions, and divergent experiences of citizenship.
 - How literary and visual narratives historicize conceptions of race, racialized migratory experiences, and materiality in contemporary France?

Book project

- *Dissident Universalisms and Postcolonial Citizenship* is about the contemporary experiences and articulations of citizenship in France, an alternate tale of the relationship between racialized minorities and the French nation-state.
- The role of literature in preserving and giving shape to the memories, feelings, and lived experiences that remain excluded from institutional archives.



Summer research

- Examine how Afro-diasporic authors attempt to theorize the relationship between migration, memories, and aesthetics.
- **Summer project: Research and write on the works of the author Léonora Miano**
- Two goals
- Explore the ways in which individual identity and colonial memory are co-constituted in Miano's literary landscape.
- Analyze the emergence and reconceptualization of a transhistorical blackness in Miano's literary works.



- In Miano's literary and journalistic works, Miano chooses the framework of migration to analyze and interpret the diverse experiences of asylum seekers and migrants. There are also young students of afrodiasporic communities who examine their relationship with the framework of French citizenship laws and national community.
- This particular framework allows Miano to evoke culturally diverse visual language, culturally specific onomatopoeia, dialectical vocabulary, references, and historical allusions, in the novels in question.
- Example of novels: Stardust, *Tel des astres éteints*
- Non-fiction: *Afropea*



Timeline toward publication

- Book contract (summer 2022)
- Submit manuscript (May and June 2023) with the **support of the AAUW Short-Term Publication Grant**



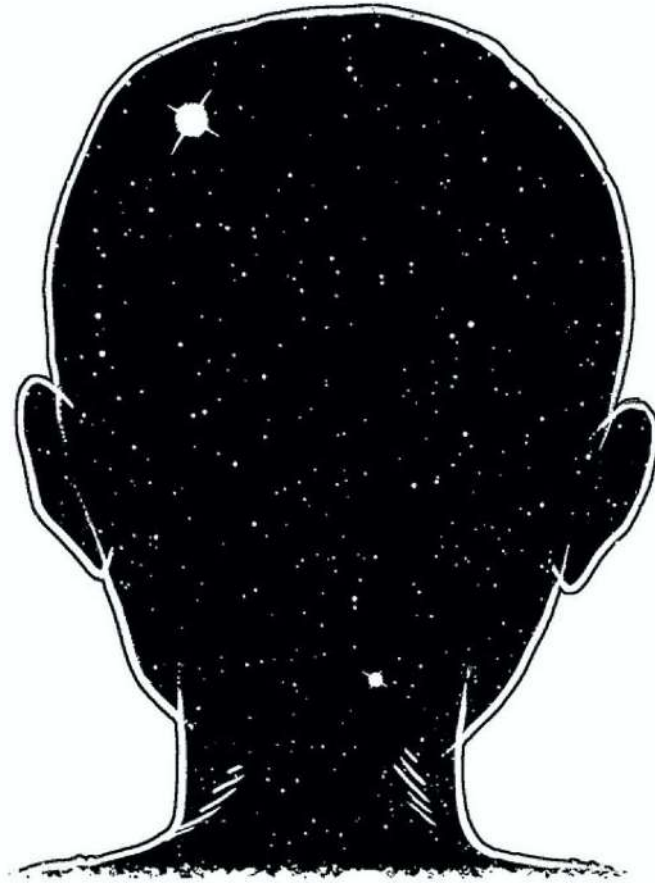
Maia ten Brink, Ph.D. Candidate (she/her)

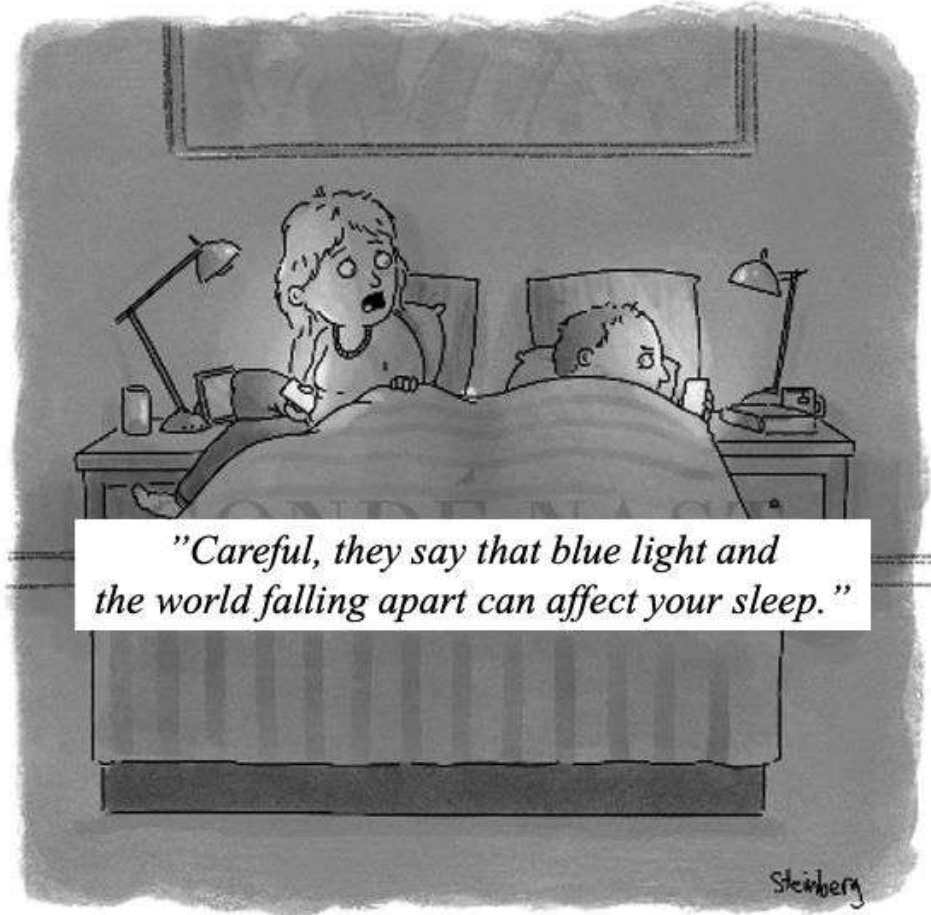
American
Fellowship



Bidirectional Relationships Between Affect and Sleep: Dynamics and Mechanisms of Change

*Stanford University
Psychology*



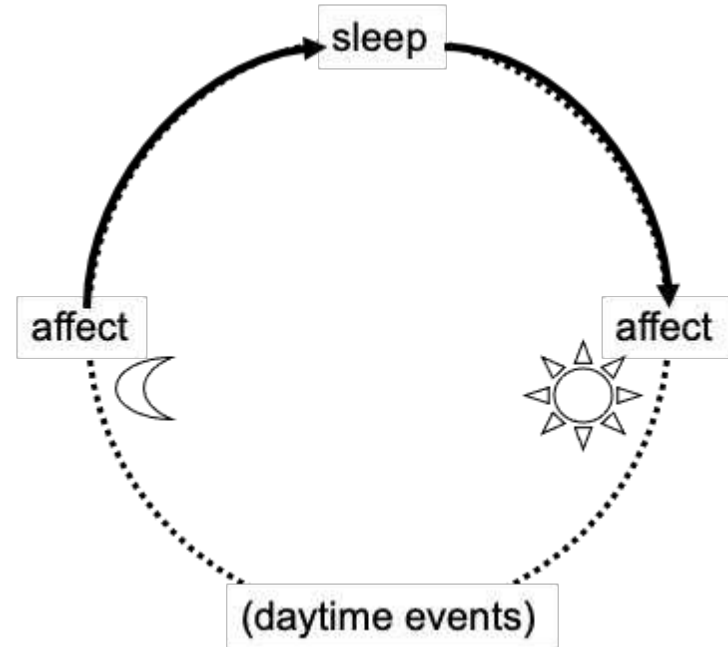


A bidirectional relationship...maybe?

Everyday experience suggests that sleep and affect are closely and bidirectionally linked^{1,2}

Evidence for a link is stronger in clinical samples^{3,4}

But in non-clinical adult samples, the empirical evidence for a link is very mixed^{1,2,5,6,7}



¹Konjarski, et al. 2018; ²Kahn, et al. 2013; ³Baglioni, et al. 2020; ⁴Ong, et al. 2015; ⁵Tempesta, et al. 2018; ⁶Fairholme & Manber, 2015; ⁷Deliens, et al., 2014

Granular dimensional framework

Sleep and affect are each multidimensional constructs

Sleep scientists and affective scientists each make distinctions within their respective fields along these dimensions:

Domains

Methods

Timescales



We need to combine these distinctions from sleep and affect

ten Brink, Dietch, Tutek, Suh, Gross, & Manber, *Sleep Med Rev*, 2022



Using granular framework as guide

Systematic review of empirical scientific articles to uncover

- Robust relationships
- Counterintuitive null patterns
- Lack of bidirectional links
- Gaps in research
- Lack of converging results

Dissertation studies following up on gaps and non-convergence

Studies in which affect temporally precedes sleep

Affect	Sleep	Duration		Global Continuity		Sleep Onset Latency		Quality / Satisfaction	
		Self-Report	Physiological Signals	Self-Report	Physiological Signals	Self-Report	Physiological Signals	Self-Report	Physiological Signals
Negative Valence	Self-Report	Short-Term	5	3	5	3	6	2	
Positive Valence	Self-Report	Short-Term	4	1	4	2	4	3	

Studies in which sleep temporally precedes affect

Affect	Sleep	Duration		Waking After Sleep Onset		Sleep Onset Latency		Quality / Satisfaction		Macro- and Micro-Sleep Architecture
		Self-Report	Physiological Signals	Physiological Signals	Physiological Signals	Self-Report	Physiological Signals	Self-Report	Physiological Signals	Physiological Signals
Negative Valence	Self-Report	Short-Term	7	13	1		4	10		4
	Physiological Signals	Short-Term		4						
Positive Valence	Self-Report	Short-Term	5	9	2		3	8	1	3
	Self-Report	Long-Term	2		3		1		3	
Arousal	Self-Report	Short-Term	1	6			1	3		
	Physiological Signals	Short-Term		4						2
Specific Emotions	Anxiety / Fear / Threat	Self-Report	1	4			1	1	1	1
	Anger / Aggression	Self-Report	1	1			1	1	1	

Flow of dissertation studies

- **Study 1:** The role of pre-sleep positive affect on subsequent sleep quality in adults
- **Study 2:** Do adolescents show a similar sleep-stress feedback loop as adults, and if so, whether coping self-efficacy interrupts the spiral?
- **Study 3:** How affect in the evening and in the morning relate to activity in the brain during intervening sleep
- **Study 4:** The role that affect regulation plays in modulating the associations between affect and sleep in daily life in adults



Conclusion

- The intersection of sleep and affect is ripe for research
- Using a granular, multidimensional framework can help identify patterns
- People's lay understanding doesn't match empirical data – why?
- There could be many sources of complexity
- Understanding that complexity may reveal important mechanisms that help to develop precise, targeted interventions to improve well-being



Janeth Jepleting, MPP.

International
Fellowship



*Pepperdine University
Public Policy*



NAME: JANETH JEPLETING MASTER'S DEGREE STUDENT

My personal story is the most incentives for pursuing master's degree in public policy today. I grew up a village where by education for girls is low due to many factors. Few of these factors are; Early teenage pregnancies, Poverty, lack of role models and so on. Kenya we have got small numbers for policy analysts.

This photo of a pregnant teenage was taken in a village in Kenya in 2020, credit photo (Monica)



PUBLIC POLICY AND DISPUTE RESOLUTION

- Public policy is about people, it is about restoring back human dignity.
- What comes in my mind when i think of public policy, is the daily challenges we go through and government failure to provide solutions.
- They are many policies areas and women are the most affected people especially in developing countries.
- Early pregnancies and forced marriages.
- According to 2021 research data, we have 152,000 New teen mothers.

Why public policy?

- Based on the African Institute for Development Policy facts research, Kenya is leading on teenage early pregnancies hence this has lead to high percentage on school dropouts .
- Where I grew up, girls and women are not given an education opportunity especially when there is limited resources, we have girls and young women who would want to go for their dreams but they lack support and I want to fight for their rights through policies

What are the solutions

- To curb this, we need to educate teenagers and girls the importance of abstaining from sex at a younger age and before marriage.
- We need to emphasize more on education and raise funds to take those who already have children back to school because they are too immature to start their families.
- All organizations for example churches, schools, society and also parents have to take the responsibilities of education girls and also young men on the effects of sex before marriages.

My contributions on public policy

- Will create policies in favour of girls and young women to fight for their education rights and equality in Kenya and the world.
- Will start funding activities to support them since I have been on their shoes, I do understand the need for education and change.
- Am aspiring to go parliamentary seat so that i push for these policies to be implemented as laws.
- Will run a mentorship program to inspire them.

Shirley Ruiz, M.Ed.

Career
Development Grant



Organizational Leadership & Learning

*Pepperdine University
Education*

Background

Supporting students with disabilities for over 15 years.

- Alternate Media Coordinator
- Assistive Technology Specialist
- Alternate Media Specialist



My mission ...

Lead the way

- ★ to champion accessibility
 - its need
 - its importance
- ★ to share my knowledge and enthusiasm
- ★ to teach, motivate and inspire content creators to create with accessibility mind
- ★ to play a small part in *Changing the World for People with Disabilities*



Kyndra C. Cleveland J.D.

Selected
Professions



Children, Families & the Law

University of California, Berkeley
Law and Psychology

Children, Families & the Law



Kyndra C. Cleveland, Ph.D.

J.D. Candidate, UC Berkeley

October 23, 2022

My Background



- Developmental Psychologist
 - Legal involvement and family separation for families
 - Barriers to family reunification
 - Judicial Decision-Making
- Law & Policy
 - Advocating for policy change in legal cases affecting families



4 Million reports

**700,000
Substantiated**



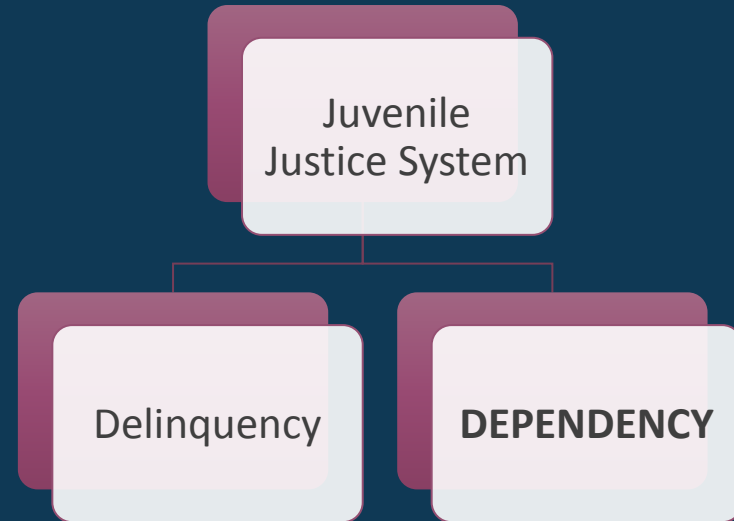
1 in 100 TPRs

Black Children 2X



JUVENILE DEPENDENCY

safely reunify families

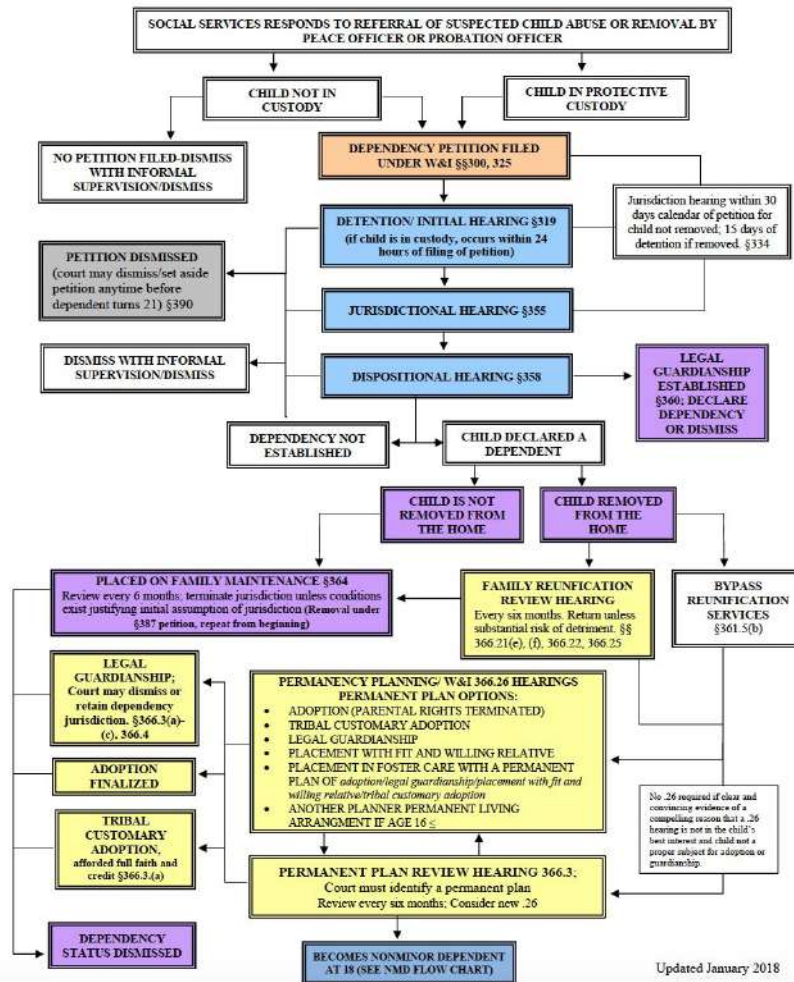


A black and white photograph showing a close-up of a young child with dark hair, looking down and crying. The child is being held by an adult, whose arm and shoulder are visible on the left side of the frame. The background is a light-colored, textured wall.

Barriers to Reunification

- Understanding the court process
- Psychological trauma
- Numerous Requirements + Fees

Juvenile Dependency Flow Chart







Child Support Payments

CA Reform: AB 1686

Reducing Child Support Referrals for Families



Berkeley Law

Policy Advocacy Clinic



THANK YOU!

- **American Association of University Women**
- Doris Duke Fellowship for the Promotion of Child Well-Being
- Department of Health & Human Services
- Ford Foundation
- National Science Foundation

This content is solely the responsibility of the author and does not necessarily represent the official views of the above funders.

Thank You!



Legacy Circle

Charmen Goehring

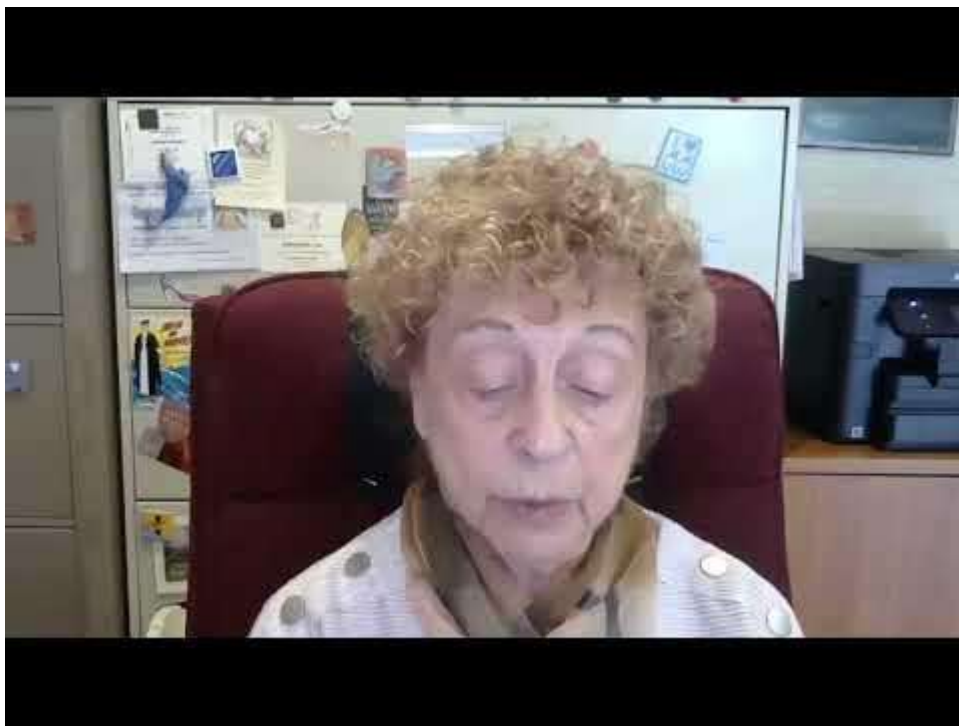


Mooneen Lecce Giving Circle

Sharon Schuster



Sharon Schuster



Sharon Schuster

(818) 888-1376

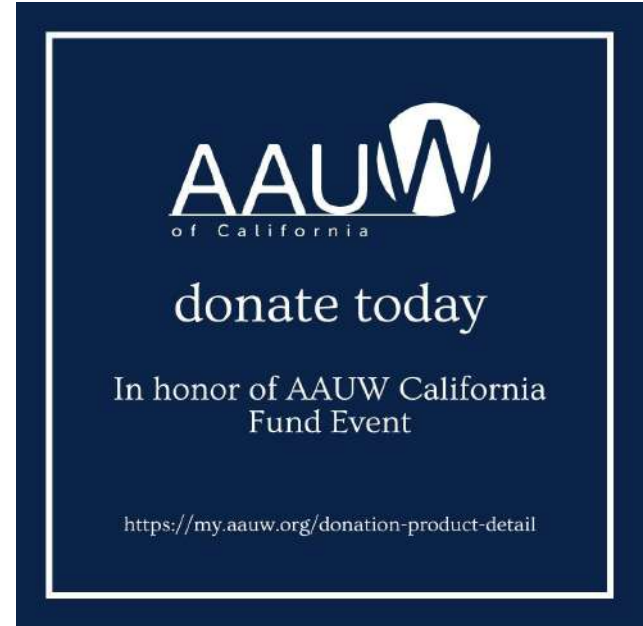
sharon@shuster.org

Mooneen Lecce Giving Circle Fund #4229



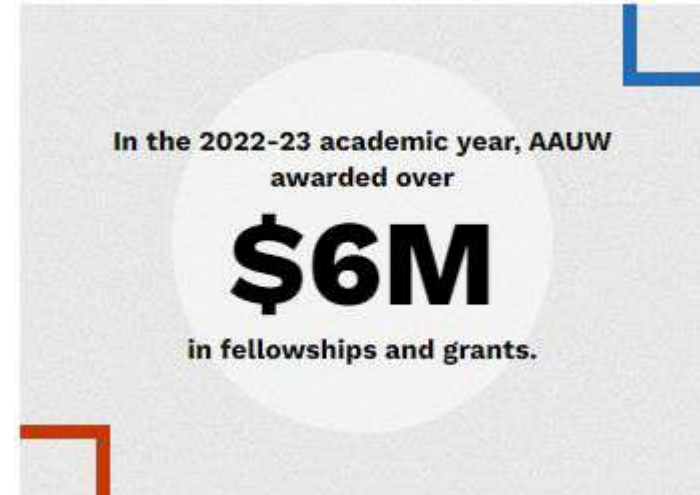
AAUW Fund

- Are you inspired by these amazing women? We are tenacious and trailblazing—advocating for women into the future.
- You may schedule one of these speakers to attend a branch or IBC event.
- We encourage donations towards our annual goal of \$525,000. We're close at \$405,437 ytd.
- Donate now! State that donation is in honor of an AAUW Fund Event.



How Does AAUW Fund Help Your Branch?

- Provides guidance and support for branch fundraising activities done on behalf of AAUW Fund.
- Plans AAUW Fund events and programs to educate members about the Fund.
- Encourages giving to the AAUW Fund.
- Schedules fellowship and grant recipients to speak at branch meetings and the Fund events.



Click [HERE](#) to schedule a speaker

AAUW Fund Opportunities

9110 AAUW Greatest Needs	Allows AAUW to respond rapidly, in our communications and advocacy, to critical issues affecting women as they emerge. Not restricted to fellowships or specific projects.
2504 NCCWSL	National Conference for College Women Student Leaders Scholarships provide access for a broader and more diverse audience to be a part of the leadership training, inspiration and networking opportunities provided during this event.
4229 Mooneen Lecce Giving Circle Special Projects	The Mooneen Lecce Giving Circle honors the memory of longtime AAUW member, Mooneen Lecce who believed deeply in volunteerism and charitable giving. When you become a member of this trailblazing group of philanthropists, you join other Circle members in selecting strategic, innovative gender equity projects where your gift will have the greatest impact.
4504 Dianne Owens Honorary	Given in honor of Dianne Owen's outstanding contribution as AAUW California State President 2020-2022 LINK to donate



KEY DATES

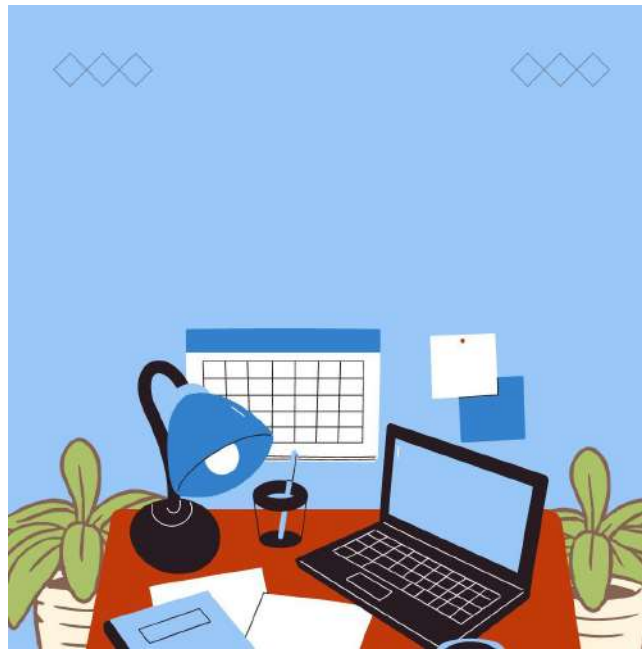
AAUW Fund Donations

- December 31 - Deadline for this year's donations

Named Gift Nominations

Click [HERE](#) to nominate

- Feb 1, 2023 - Deadline for State Named Gift nominations
- March 1, 2023 - Deadline for Branch Named Gift nominations (one for each \$750 donated)



The Success Of This Event Was A Team Effort

AAUW Fund Committee

- Karen Vanderwerken, Chair
- Judy Horan, Charmen Goehring, Deanna Arthur, Elizabeth Bathgate, Jan Cook, Sharon Westafer

AAUW Communications Committee

- Randa Blanding, Julika Barrett, Dawn Johnson, Linda Slater

Sandi Gabe, President AAUW California



Katrine Sun Breese

