

ASHA BAJAJ

She/Her/Hers

Branch: Danville-Alamo-Walnut Creek

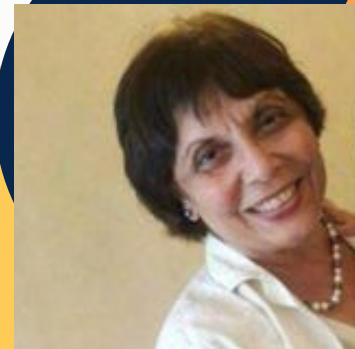
Membership in AAUW: 32 years

Member of AAUW California

State Public Policy Committee: 5 years

What do you find most important about Public Policy and Public Policy work?

"Staying abreast of the issues, legal advocacy work, and being a part of the solution."



NANCY BREMEAU

She/Her/Hers

Branch: Silicon Valley

Membership in AAUW: 6 years

Member of AAUW California

State Public Policy Committee: 2 years

What do you find most important about Public Policy and Public Policy work?

"What I love about AAUW is that it centers the rights and well-being of women and girls which is a lifelong passion of mine. I am particularly interested in advocating for policies that support women and girls at the state and national level."



ERICA DIAS

She/Her/Hers

Branch: California Online

Membership in AAUW: 3 years

Member of AAUW California

State Public Policy Committee: 2 years

What do you find most important about Public Policy and Public Policy work?

"As an equity researcher, I have studied the unrivaled power of engaged voters and committed activists. We can all do something to advance the mission of AAUW. The Public Policy Committee's efforts will positively impact future generations. Here's to all those who came before us, all those in the fight, and to a brighter, more equitable, and accessible future for everyone."



MARISOL CARLOS HERERRO

She/Her/Hers

Branch: California Online

Membership in AAUW: First year

Member of AAUW California

State Public Policy Committee: First year (interned last year)

What do you find most important about Public Policy and Public Policy work?

"Public policy is important because it establishes power building for marginalized groups and serves as a tool for political equity. As public policy shapes social change through the implementation of social resource programs and upholding of human rights, its importance serves in it contributing to meeting the needs of the general public for common wellness and I truly value that!"



MISSY MACEYKO

She/Her/Hers

Branch: Long Beach

Membership in AAUW: 8 years

Member of AAUW California

State Public Policy Committee: 8 years

What do you find most important about Public Policy and Public Policy work?

"Public policy work is important for advancing, regulating, and institutionalizing more equitable practices. It is important to advance specific pieces of legislation through advocacy. It is equally important to educate others about the ways in which policy impacts their everyday lives while also offering them ways that they can impact meaningful change."



NANCY P. MAJOR

She/Her/Hers

Branch: Marin

Membership in AAUW: 28 years

Member of AAUW California

State Public Policy Committee: 3 years

What do you find most important about Public Policy and Public Policy work?

"Furtherance of AAUW Mission"



KATHI HARPER

She/Her/Hers

Branch: CA Online

Membership in AAUW: 20 years

Member of AAUW California

State Public Policy Committee: 9 years

What do you find most important about Public Policy and Public Policy work?

"I joined AAUW because of our mission, and I find that doing Public Policy work is the most effective way of carrying out that mission. Our "Trek" and scholarship programs provide wonderful opportunities for girls and women on an individual basis, but Public Policy work has the potential to effect positive change for ALL women and girls in California, for now and for the future."



GINNY HATFIELD

She/Her/Hers

Branch: San Fernando Valley

Membership in AAUW: 31 years

Member of AAUW California

State Public Policy Committee: 8 years

What do you find most important about Public Policy and Public Policy work?

"Educating members, engaging them, and advocating for the passage of legislation inherent to our priorities."



ROHAN BHARDWAJ

He/They/Theirs

Branch: Long Beach

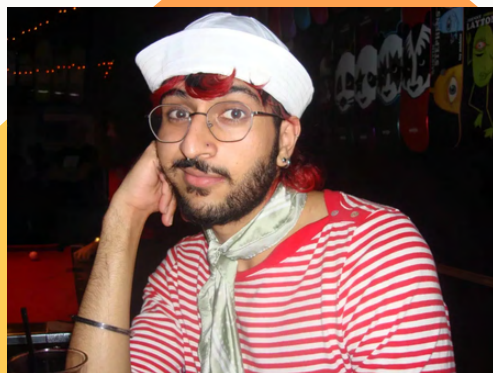
Membership in AAUW: First year

Member of AAUW California

State Public Policy Committee: First year
(interned last year)

What do you find most important about Public Policy and Public Policy work?

"I believe public policy is at the heart of democracy. It requires constant participation and advocacy to ensure it reflects the needs of our communities. That's why it is so important to remain engaged, to speak up, and to remind our government that it is accountable to its constituents."



AMY HOM

She/Her/Hers

Branch: Silicon Valley, California Online

Membership in AAUW: 5 years

Member of AAUW California

State Public Policy Committee: 5 years

What do you find most important about Public Policy and Public Policy work?

"I used to believe that our nation would continually make positive progress in equity, diversity, and democracy. Instead I have watched the clock being turned back on reproductive freedoms, voting rights, LGBTQ rights, and diversification in higher education. Public Policy is the most impactful way that we have to advance equity, fairness, and social and racial justice for all members of our society."



MALENA CLARK

She/Her/Hers

Branch: California Online

Membership in AAUW: First year

Member of AAUW California

State Public Policy Committee: First year (interned last year)

What do you find most important about Public Policy and Public Policy work?

"I believe that public policy is crucial in creating social equity, particularly in creating rights for minority groups, gender equity, and climate protections. Effective policy can create lasting, systemic change and ensure that all communities are respected and protected."



DONNA KINDSCHUH

She/Her/Hers

Branch: Visalia Sequoia

Membership in AAUW:

Member of AAUW California

State Public Policy Committee: 2 years

What do you find most important about Public Policy and Public Policy work?

"I like to build community and I like advocacy for young women."



SUE MILLER

She/Her/Hers

Branch: Roseville-South Placer

Membership in AAUW: 52 years

**Member of AAUW California
State Public Policy Committee:** 15 years

What do you find most important about Public Policy and Public Policy work?

"It can change women's lives for the better!"



OGIE STROGATZ

She/Her/Hers

Branch: Danville-Alamo-Walnut Creek

Membership in AAUW: 4 years

**Member of AAUW California
State Public Policy Committee:** 2 years

What do you find most important about Public Policy and Public Policy work?

"I welcome the opportunity to be a vigorous advocate for AAUW CA's Public Policy Priorities. Public Policy work offers a terrific opportunity to be a force for good with wide-ranging impact -- at local, state, and federal levels."



SEENA TRIGAS

She/Her/Hers

Branch: Carlsbad-Oceanside-Vista

Membership in AAUW: 14 years

**Member of AAUW California
State Public Policy Committee:** 2 years

What do you find most important about Public Policy and Public Policy work?

"Carrying forward our mission statements by taking action when they are threatened."



CLAIRE NOONAN

She/Her/Hers

Branch: Silicon Valley

Membership in AAUW: 47 years

**Member of AAUW California
State Public Policy Committee:** 12 years

What do you find most important about Public Policy and Public Policy work?

“Determining legislation to support”



LAURINDA OCHOA

She/Her/Hers

Branch: Danville-Alamo-Walnut Creek

Membership in AAUW: 2 years

**Member of AAUW California
State Public Policy Committee:** 2 years

What do you find most important about Public Policy and Public Policy work?

“It's increasingly important to work to protect the future for all women, including my daughters and young granddaughters. Our social and political rights, our economic security, our access to equal, quality education, and our opportunities to contribute fully to society seem to be under attack. Our rights as women are not guaranteed. AAUW Public policy work is important to me as an opportunity to work together as a team to protect our futures and the futures of all women, young and older.”

