
AAUW Fund Event

October 30, 2021

Welcome

Presentation materials:

- Download the presentation from the AAUW California website home page.
- The meeting recording, a summary Q&A document and example documents will be posted following the meeting.

Questions:

- Use the Q&A function to pose a question. We'll stop periodically to answer general questions.
- Chat has been disabled.

The screenshot shows a Zoom 'Question and Answer' window. At the top, a red dashed arrow points from the text 'Check here for answers to all questions.' to the 'All questions (1)' tab. Another red dashed arrow points from the text 'Check here for answers to your questions' to the 'My questions (1)' tab. The main area displays a question from 'You' at 09:45 AM: 'Where can I download the presentation?'. Below it, a response from 'AAUW California' at 09:46 AM is partially visible. A red dashed arrow points from the text 'Type your question here.' to the 'Q&A' button in the bottom toolbar. The bottom toolbar also features a 'Chat' button and a 'Leave' button. A message on the left side of the window states: 'Chat has been disabled. Use the Q&A function'.

Welcome and Introductions



Lynne Batchelor
Chair, AAUW California Fund Committee



Dianne Owens
AAUW California President



Heather Miller
AAUW Director of Advancement

Zofia Włodarczyk, Ph.D.



Migration, Gender and Human Rights

*University of California, Davis
Sociology*

Female Chechen Refugees Fleeing Domestic Violence and Political Persecution:

Challenging Theories of Migration,
Integration, and Transnationalism

Methods of data-gathering

Participant observation

+

Informal conversations
with Chechen women

In-depth interviews

with professionals
(13)

Biographical/narrative interviews

with female Chechen refugees
(45 interviews with 35 women)



- Two Chechen wars with Russia
- 25% of the Chechen population has left their homeland.

Political conflict as a source of and an escape from domestic violence

Domestic violence & refugee status

- Not all women who experience domestic violence may be subject to international refugee protection.
- After recent political shifts in some parts of Europe (e.g. in Poland), it became harder for domestic violence victims to be granted asylum.

I told about this political problem [at the border] because it happened after all. But I also talked about what I experienced at home. For me, what happened at home was more important. I told him [the border official] that my husband was abusing me. I've talked about both things. And they let me through (Kariina).

I did not know even where to go [to get passports]. My [female] friend told me that one woman did it in our area, and she came to my place, she took pictures of all of us at home. She did not ask any questions; she knew exactly what she was doing. Two weeks later I had all the passports (Lulii).

Humanitarian crisis on the Polish-Belarusian border



Thank you!

zwlodarczyk@ucdavis.edu

Sabrina Baffert, M.P.H.



Epidemiology

*University of California, Berkeley
Epidemiology*



Sabrina Baffert

Research Scientist & MPH student

RNA-based therapeutics

- Current research and commercial focus is on the development of full length messenger RNA (mRNA) manufacturing
- mRNA technology is showcased in the current COVID-19 vaccines
- Potential therapeutic applications in other infectious diseases, rare diseases etc..



Epidemiology



- Assessing the distributions of health, disease and injury in populations
- Calculating and interpreting measures of disease frequency and association
- Evaluating existing public health programs

Health and Social Behavior

- Applying public health ecological models emphasizing and acknowledging the interactions between biology, behavior environment and distribution of life opportunities
- Understanding how socially constructed concepts influence health inequities



Thank you

Gillian Bogart, Ph.D.



Edge Effects: Salt-Making Worlds of Timor

University of California, Santa Cruz
Socio-cultural anthropology



Photo courtesy of UCSC









Photo courtesy of
Rika Konai

Thank
You!

Stacey Cabaj, M.F.A.

American
Fellowship



The Sound of Touch: Synesthesia and Theatre

*Loyola Marymount University
Theatre Pedagogy*



The Sound of Touch



Illustration by Emma Lynch
"The Keep Going Song" by The Ben

Identities (Who)

Curiosities (What)

Explorations (How)

Meaning-making (Why)



Identities

- Stacey Cabaj (she/her)
- Métis and Tongva land
- Citizenry and borders?
- Theatre & Pedagogy Prof.
- ...Aspiring Miss Frizzle
- Bonus Mom Activism!



Expansion by Paige Bradley





Curiosities

“I just wasn’t made for these times”

The currency of touch: how we perceive the world

Technology-mediated presence

Synesthesia

“A hereditary condition in which a triggering stimulus evokes the automatic, involuntary, affect-laden, and conscious perception of a sensory or conceptual property that differs from that of the trigger.”

-Dr. Richard E. Cytowic in *Synesthesia* (3)



Synesthetic visual art by Christina Eve



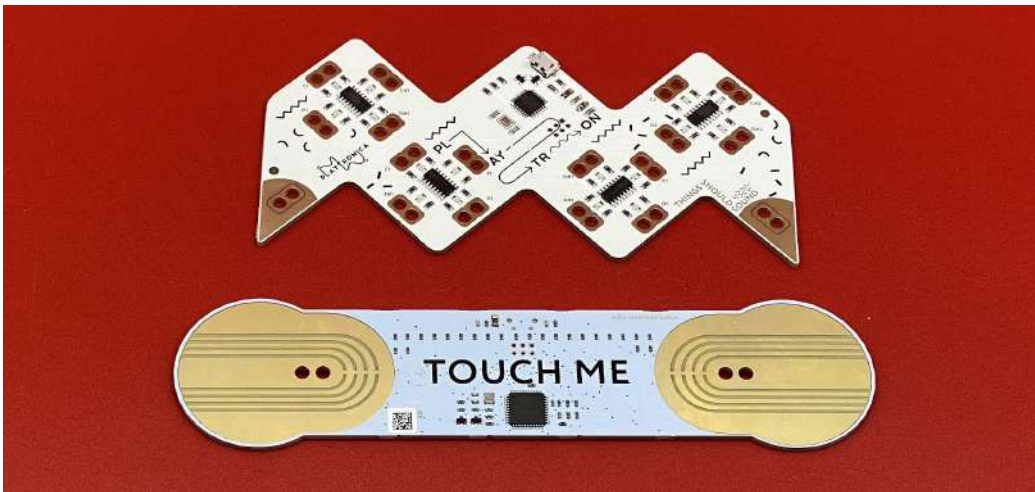
Explorations

Playtronica

Intentional Technological Synesthesia

Smart textiles: touch —> sound

Theatre + Education Laboratory



Playtronica's Smart Textiles



Contributions to Meaning-Making in the 2020s?

Carrie Fisher said

to “take your broken heart and make it into art.”

So, in order to discover answers about

“what it feels like to be you in the 2020s”

my collaborators and I are

investigating, documenting, and describing

1) training exercises for theatre education &

2) devising practices for immersive theatre

that use current technologies

to become more attuned to

our sensory experiences of the world...



AKA:
To know ourselves
and our world
more deeply through
technology-enhanced
storytelling.



**Thank you for your kind attention.
May you be safe, happy, well, and free.**



Jasmeet Dhaliwal



Investigating the Role of a Supernova Explosion in the Formation of the Solar System

*University of California-Santa Cruz
Planetary Science*

FORMATION OF THE SOLAR SYSTEM

Solar
Nebula



Early
Condensation



Planetary
Accretion



STELLAR NURSERY

Supernova (exploding stars) form
iron and heavier elements

1
1A
1A

1
H
Hydrogen
1.008

2
2A
2A

2
He
Helium
4.003

3
Li
Lithium
6.941

4
Be
Beryllium
9.012

11
Na
Sodium
22.990

12
Mg
Magnesium
24.305

19
K
Potassium
39.098

20
Ca
Calcium
40.078

37
Rb
Rubidium
85.468

38
Sr
Strontium
87.62

55
Cs
Cesium
132.905

56
Ba
Barium
137.327

87
Fr
Francium
223

88
Ra
Radium
226

13
Al
Aluminum
26.982

14
Si
Silicon
28.086

31
Ga
Gallium
69.723

32
Ge
Germanium
72.631

49
In
Indium
114.818

50
Sn
Tin
118.710

83
Bi
Bismuth
208.98

84
Po
Polonium
209

65
Tb
Terbium
158.925

66
Dy
Dysprosium
162.50

99
Es
Einsteinium
[252]

100
Fm
Fermium
[257]

71
Lu
Lutetium
174.967

72
Hf
Hafnium
178.49

103
Lr
Lawrencium
[262]

104
Rf
Rutherfordium
[261]

23
V
Vanadium
50.942

24
Cr
Chromium
51.996

41
Nb
Niobium
92.906

42
Mo
Molybdenum
95.94

59
Pr
Praseodymium
140.908

60
Nd
Neodymium
144.24

89
Pa
Protactinium
231.036

90
Th
Thorium
232.038

67
Ho
Holmium
164.930

68
Er
Erbium
167.256

97
Bk
Berkelium
247.070

98
Cf
Californium
251.080

75
Re
Rhenium
186.207

76
Os
Osmium
190.23

105
Db
Dubnium
[262]

106
Sg
Seaborgium
[266]

73
Ta
Tantalum
180.948

74
W
Tungsten
183.84

103
Lr
Lawrencium
[262]

104
Rf
Rutherfordium
[261]

69
Tm
Thulium
168.934

70
Yb
Ytterbium
173.054

101
Md
Mendelevium
[258]

102
No
Nobelium
[259]

61
Pm
Promethium
[145]

62
Sm
Samarium
150.36

91
Pa
Protactinium
231.036

92
U
Uranium
238.029

63
Eu
Europium
151.964

64
Gd
Gadolinium
157.25

93
Np
Neptunium
237.048

94
Pu
Plutonium
244.064

65
Tb
Terbium
158.925

66
Dy
Dysprosium
162.50

95
Am
Americium
243.061

96
Cm
Curium
247.070

67
Ho
Holmium
164.930

68
Er
Erbium
167.256

97
Bk
Berkelium
247.070

98
Cf
Californium
251.080

69
Tm
Thulium
168.934

70
Yb
Ytterbium
173.054

101
Md
Mendelevium
[258]

102
No
Nobelium
[259]

71
Lu
Lutetium
174.967

72
Hf
Hafnium
178.49

103
Lr
Lawrencium
[262]

104
Rf
Rutherfordium
[261]

73
Ta
Tantalum
180.948

74
W
Tungsten
183.84

105
Db
Dubnium
[262]

106
Sg
Seaborgium
[266]

75
Re
Rhenium
186.207

76
Os
Osmium
190.23

107
Bh
Bohrium
[264]

108
Hs
Hassium
[277]

77
Ir
Iridium
192.22

78
Pt
Platinum
195.08

109
Mt
Meitnerium
[268]

110
Ds
Darmstadtium
[271]

79
Au
Gold
196.967

80
Hg
Mercury
200.59

111
Rg
Roentgenium
[272]

112
Cn
Copernicium
[285]

81
Tl
Thallium
204.38

82
Pb
Lead
207.2

113
Nh
Nihonium
[284]

114
Fl
Flerovium
[289]

83
Bi
Bismuth
208.98

84
Po
Polonium
209

115
Mc
Moscovium
[288]

116
Lv
Livermorium
[293]

85
At
Astatine
210

86
Rn
Radon
222

117
Ts
Tennessine
[294]

118
Og
Oganesson
[294]

87
Fr
Francium
223

88
Ra
Radium
226

119
Uut
Ununtrium
[289]

120
Uub
Ununbium
[288]

89
Pa
Protactinium
231.036

90
Th
Thorium
232.038

121
Uuh
Ununhium
[285]

122
Uuq
Ununquadium
[284]

91
Pa
Protactinium
231.036

92
U
Uranium
238.029

123
Uuq
Ununquadium
[284]

124
Uub
Ununbium
[288]

93
Np
Neptunium
237.048

94
Pu
Plutonium
244.064

125
Uut
Ununtrium
[289]

126
Uuq
Ununquadium
[289]

95
Am
Americium
243.061

96
Cm
Curium
247.070

127
Uup
Ununpentium
[285]

128
Uuq
Ununquadium
[289]

97
Bk
Berkelium
247.070

98
Cf
Californium
251.080

129
Uup
Ununpentium
[285]

130
Uub
Ununbium
[288]

99
Es
Einsteinium
[252]

100
Fm
Fermium
[257]

131
Uut
Ununtrium
[289]

132
Uub
Ununbium
[288]

101
Md
Mendelevium
[258]

102
No
Nobelium
[259]

133
Uut
Ununtrium
[289]

134
Uub
Ununbium
[288]

103
Lr
Lawrencium
[262]

104
Rf
Rutherfordium
[261]

135
Uut
Ununtrium
[289]

136
Uub
Ununbium
[288]

105
Db
Dubnium
[262]

106
Sg
Seaborgium
[266]

137
Uut
Ununtrium
[289]

138
Uub
Ununbium
[288]

107
Bh
Bohrium
[264]

108
Hs
Hassium
[277]

139
Uut
Ununtrium
[289]

140
Uub
Ununbium
[288]

109
Mt
Meitnerium
[268]

110
Ds
Darmstadtium
[271]

141
Uut
Ununtrium
[289]

142
Uub
Ununbium
[288]

111
Rg
Roentgenium
[272]

112
Cn
Copernicium
[285]

143
Uut
Ununtrium
[289]

144
Uub
Ununbium
[288]

113
Nh
Nihonium
[284]

114
Fl
Flerovium
[289]

145
Uut
Ununtrium
[289]

146
Uub
Ununbium
[288]

115
Mc
Moscovium
[288]

116
Lv
Livermorium
[293]

147
Uut
Ununtrium
[289]

148
Uub
Ununbium
[288]

117
Ts
Tennessine
[294]

118
Og
Oganesson
[294]

149
Uut
Ununtrium
[289]

150
Uub
Ununbium
[288]

119
Uut
Ununtrium
[289]

120
Uub
Ununbium
[288]

151
Uut
Ununtrium
[289]

152
Uub
Ununbium
[288]

121
Uuh
Ununhium
[285]

122
Uuq
Ununquadium
[284]

153
Uut
Ununtrium
[289]

154
Uub
Ununbium
[288]

123
Uuq
Ununquadium
[284]

124
Uub
Ununbium
[288]

155
Uut
Ununtrium
[289]

156
Uub
Ununbium
[288]

125
Uup
Ununpentium
[285]

126
Uuq
Ununquadium
[289]

157
Uut
Ununtrium
[289]

158
Uub
Ununbium
[288]

127
Uup
Ununpentium
[285]

128
Uuq
Ununquadium
[289]

159
Uut
Ununtrium
[289]

160
Uub
Ununbium
[288]

129
Uup
Ununpentium
[285]

130
Uub
Ununbium
[288]

161
Uut
Ununtrium
[289]

162
Uub
Ununbium
[288]

131
Uut
Ununtrium
[289]

132
Uub
Ununbium
[288]

163
Uut
Ununtrium
[289]

164
Uub
Ununbium
[288]

133
Uut
Ununtrium
[289]

134
Uub
Ununbium
[288]

165
Uut
Ununtrium
[289]

166
Uub
Ununbium
[288]

135
Uut
Ununtrium
[289]

136
Uub
Ununbium
[288]

167
Uut
Ununtrium
[289]

168
Uub
Ununbium
[288]

137
Uut
Ununtrium
[289]

138
Uub
Ununbium
[288]

169
Uut
Ununtrium
[289]

170
Uub
Ununbium
[288]

139
Uut
Ununtrium
[289]

140
Uub
Ununbium
[288]

171
Uut
Ununtrium
[289]

172
Uub
Ununbium
[288]

141
Uut
Ununtrium
[289]

142
Uub
Ununbium
[288]

173
Uut
Ununtrium
[289]

174
Uub
Ununbium
[288]

143
Uut
Ununtrium
[289]

144
Uub
Ununbium
[288]

175
Uut
Ununtrium
[289]

176
Uub
Ununbium
[288]

145
Uut
Ununtrium
[289]

146
Uub
Ununbium
[288]

177
Uut
Ununtrium
[289]

178
Uub
Ununbium
[288]

147
Uut
Ununtrium
[289]

148
Uub
Ununbium
[288]

179
Uut
Ununtrium
[289]

180
Uub
Ununbium
[288]

149
Uut
Ununtrium
[289]

150
Uub
Ununbium
[288]

181
Uut
Ununtrium
[289]

182
Uub
Ununbium
[288]

151
Uut
Ununtrium
[289]

152
Uub
Ununbium
[288]

183
Uut
Ununtrium
[289]

184
Uub
Ununbium
[288]

153
Uut
Ununtrium
[289]

154
Uub
Ununbium
[288]

185
Uut
Ununtrium
[289]

186
Uub
Ununbium
[288]

155
Uut
Ununtrium
[289]

156
Uub
Ununbium
[288]

187
Uut
Ununtrium
[289]

188
Uub
Ununbium
[288]

157
Uut
Ununtrium
[289]

158
Uub
Ununbium
[288]

189
Uut
Ununtrium
[289]

190
Uub
Ununbium
[288]

159
Uut
Ununtrium
[289]

160
Uub
Ununbium
[288]

191
Uut
Ununtrium
[289]

192
Uub
Ununbium
[288]

161
Uut
Ununtrium
[289]

162
Uub
Ununbium
[288]

193
Uut
Ununtrium
[289]

194
Uub
Ununbium
[288]

163
Uut
Ununtrium
[289]

164
Uub
Ununbium
[288]

195
Uut
Ununtrium
[289]

196
Uub
Ununbium
[288]

165
Uut
Ununtrium
[289]

166
Uub
Ununbium
[288]

197
Uut
Ununtrium
[289]

198
Uub
Ununbium
[288]

167
Uut
Ununtrium
[289]

168
Uub
Ununbium
[288]

199
Uut
Ununtrium
[289]

200
Uub
Ununbium
[288]

169
Uut
Ununtrium
[289]

170
Uub
Ununbium
[288]

201
Uut
Ununtrium
[289]

202
Uub
Ununbium
[288]

171
Uut
Ununtrium
[289]

172
Uub
Ununbium
[288]

203
Uut
Ununtrium
[289]

204
Uub
Ununbium
[288]

173
Uut
Ununtrium
[289]

174
Uub
Ununbium
[288]

205
Uut
Ununtrium
[289]

206
Uub
Ununbium
[288]

175
Uut
Ununtrium
[289]

176
Uub
Ununbium
[288]

207
Uut
Ununtrium
[289]

208
Uub
Ununbium
[288]

177
Uut
Ununtrium
[289]

178
Uub
Ununbium
[288]

209
Uut
Ununtrium
[289]

210
Uub
Ununbium
[288]

179
Uut
Ununtrium
[289]

180
Uub
Ununbium
[288]

211
Uut
Ununtrium
[289]

212
Uub
Ununbium
[288]

181
Uut
Ununtrium
[289]

182
Uub
Ununbium
[288]

213
Uut
Ununtrium
[289]

214
Uub
Ununbium
[288]

183
Uut
Ununtrium
[289]

184
Uub
Ununbium
[288]

215
Uut
Ununtrium
[289]

216
Uub
Ununbium
[288]

185
Uut
Ununtrium
[289]

186
Uub
Ununbium
[288]

217
Uut
Ununtrium
[289]

218
Uub
Ununbium
[288]

187
Uut
Ununtrium
[289]

188
Uub
Ununbium
[288]

219
Uut
Ununtrium
[289]

220
Uub
Ununbium
[288]

189
Uut
Ununtrium
[289]

190
Uub
Ununbium
[288]

221
Uut
Ununtrium
[289]

222
Uub
Ununbium
[288]

191
Uut
Ununtrium
[289]

192
Uub
Ununbium
[288]

223
Uut
Ununtrium
[289]

224
Uub
Ununbium
[288]

193
Uut
Ununtrium
[289]

194
Uub
Ununbium
[288]

225
Uut
Ununtrium
[289]

226
Uub
Ununbium
[288]

195
Uut
Ununtrium
[289]

196
Uub
Ununbium
[288]

227
Uut
Ununtrium
[289]

228
Uub
Ununbium
[288]

197
Uut
Ununtrium
[289]

198
Uub
Ununbium
[288]

229
Uut
Ununtrium
[289]

230
Uub
Ununbium
[288]

199
Uut
Ununtrium
[289]

200
Uub
Ununbium
[288]

231
Uut
Ununtrium
[289]

232
Uub
Ununbium
[288]

201
Uut
Ununtrium
[289]

202
Uub
Ununbium
[288]

233
Uut
Ununtrium
[289]

234
Uub
Ununbium
[288]

203
Uut
Ununtrium
[289]

204
Uub
Ununbium
[288]

235
Uut
Ununtrium
[289]

236
Uub
Ununbium
[288]

205
Uut
Ununtrium
[289]

206
Uub
Ununbium
[288]

237
Uut
Ununtrium
[289]

238
Uub
Ununbium
[288]

207
Uut
Ununtrium
[289]

208
Uub
Ununbium
[288]

239
Uut
Ununtrium
[289]

240
Uub
Ununbium
[288]

209
Uut
Ununtrium
[289]

210
Uub
Ununbium
[288]

241
Uut
Ununtrium
[289]

242
Uub
Ununbium
[288]

211
Uut
Ununtrium
[289]

212
Uub
Ununbium
[288]

243
Uut
Ununtrium
[289]

244
Uub
Ununbium
[288]

213
Uut
Ununtrium
[289]

214
Uub
Ununbium
[288]

245
Uut
Ununtrium
[289]

246
Uub
Ununbium
[288]

215
Uut
Ununtrium
[289]

216
Uub
Ununbium
[288]

247
Uut
Ununtrium
[289]

248
Uub
Ununbium
[288]

217
Uut
Ununtrium
[289]

218
Uub
Ununbium
[288]

249
Uut
Ununtrium
[289]

250
Uub
Ununbium
[288]

219
Uut
Ununtrium
[289]

220
Uub
Ununbium
[288]

251
Uut
Ununtrium
[289]

252
Uub
Ununbium
[288]

221
Uut
Ununtrium
[289]

222
Uub
Ununbium
[288]

253
Uut
Ununtrium
[289]

254
Uub
Ununbium
[288]

223
Uut
Ununtrium
[289]

224
Uub
Ununbium
[288]

255
Uut
Ununtrium
[289]

256
Uub
Ununbium
[288]

225
Uut
Ununtrium
[289]

226
Uub
Ununbium
[288]

257
Uut
Ununtrium
[289]

258
Uub
Ununbium
[288]

227
Uut
Ununtrium
[289]

228
Uub
Ununbium
[288]

259
Uut
Ununtrium
[289]

260
Uub
Ununbium
[288]

229
Uut
Ununtrium
[289]

230
Uub
Ununbium
[288]

261
Uut
Ununtrium
[289]

262
Uub
Ununbium
[288]

231
Uut
Ununtrium
[289]

232
Uub
Ununbium
[288]

263
Uut
Ununtrium
[289]

264
Uub
Ununbium
[288]

233
Uut
Ununtrium
[289]

234
Uub
Ununbium
[288]

265
Uut
Ununtrium
[289]

266
Uub
Ununbium
[288]

235
Uut
Ununtrium
[289]

236
Uub
Ununbium
[288]

267
Uut
Ununtrium
[289]

268
Uub
Ununbium
[288]

237
Uut
Ununtrium
[289]

238
Uub
Ununbium
[288]

269
Uut
Ununtrium
[289]

270
Uub
Ununbium
[288]

239
Uut
Ununtrium
[289]

240
Uub
Ununbium
[288]

271
Uut
Ununtrium
[289]

272
Uub
Ununbium
[288]

241
Uut
Ununtrium
[289]

242
Uub
Ununbium
[288]

273
Uut
Ununtrium
[289]

274
Uub
Ununbium
[288]

243
Uut
Ununtrium
[289]

244
Uub
Ununbium
[288]

275
Uut
Ununtrium
[289]

276
Uub
Ununbium
[288]

245
Uut
Ununtrium
[289]

246
Uub
Ununbium
[288]

277
Uut
Ununtrium
[289]

278
Uub
Ununbium
[288]

247
Uut
Ununtrium
[289]

248
Uub
Ununbium
[288]

279
Uut
Ununtrium
[289]

280
Uub
Ununbium
[288]

249
Uut
Ununtrium
[289]

250
Uub
Ununbium
[288]

281
Uut
Ununtrium
[289]

282
Uub
Ununbium
[288]

251
Uut
Ununtrium
[289]

252
Uub
Ununbium
[288]

283
Uut
Ununtrium
[289]

284
Uub
Ununbium
[288]

253
Uut
Ununtrium
[289]

254
Uub
Ununbium
[288]

285
Uut
Ununtrium
[289]

286
Uub
Ununbium
[288]

255
Uut
Ununtrium
[289]

256
Uub
Ununbium
[288]

287
Uut
Ununtrium
[289]

288
Uub
Ununbium
[288]

257
Uut
Ununtrium
[289]

258
Uub
Ununbium
[288]

289
Uut
Ununtrium
[289]

290
Uub
Ununbium
[288]

259
Uut
Ununtrium
[289]

260
Uub
Ununbium
[288]

291
Uut
Ununtrium
[289]

292
Uub
Ununbium
[288]

261
Uut
Ununtrium
[289]

262
Uub
Ununbium
[288]

293
Uut
Ununtrium
[289]

294
Uub
Ununbium
[288]

263
Uut
Ununtrium
[289]

264
Uub
Ununbium
[288]

295
Uut
Ununtrium
[289]

296
Uub
Ununbium
[288]

</

YOUNG SOLAR SYSTEM



Primitive meteorites (chondrites)
form during early condensation

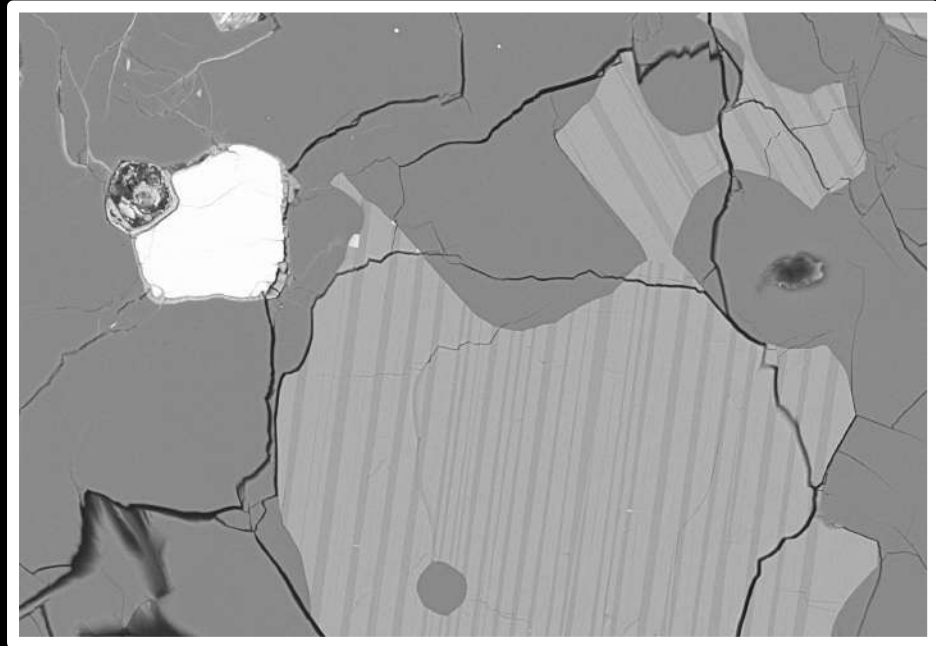
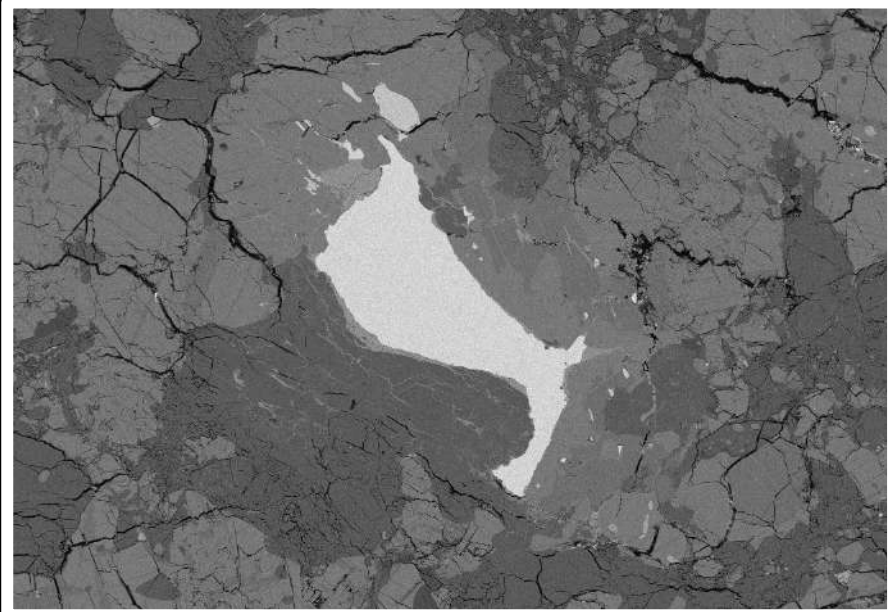
PLANET FORMATION



Evolved or differentiated meteorites
(achondrites)
form in planetary bodies

ANALYSES OF EUCRITES

(differentiated meteorites)



EVIDENCE FOR LOCAL SUPERNOVAE?

Iron-60

^{60}Fe
(extinct)

Nickel-60

^{60}Ni
(measurable)



Alison Espinosa-Setchko, M.S.W.



Clinical Social Work

Smith College - School of Social Work

Ana Grande



Physical Sciences and Engineering Exploration for 100 Low-Income Central Los Angeles Girls

PF Bresee Foundation



Safe Spaces:

Encouraging Curiosity
and Careers in STEM
for 100 Girls in
Central Los Angeles
*(a community impact
grant)*



Deliverables

Bresee's STEAM workshops will provide over 40 middle school girls with hands-on experiences in science-based activities, culminating in a project.

Bresee will offer a one-day excursion to provide over 50 girls with an experience exploring a local space museum.

Bresee's college transition bootcamp will prepare 6 incoming first year college student girls for their first year in higher education.

Bresee's 25 girl high school interns will begin their initial summer orientation and training in preparation for the year-long intern programs.

Bresee will recruit over 100 girls to participate in this project from local middle and high schools.

Activities YTD

Middle School

- STEM Summer Camp
 - Earth Sciences
 - Robotics
 - Coding
 - Oceanic Coding Camp Day

High School

- STEM Summer Paid Internships
 - Music Engineering
 - Health Clinic
 - Gen2 Camp
- Young Entrepreneurs Camp
- College & Career Readiness
- Coding: Drones & Unicorns





Outcomes - YTD

- 81% of MS Girls found STEM fun
- 46% Indicated a new interest in Math and Science classes
- 97% of HS Girls completed Career Pathways plan
- 100% of participants finished their internship
- 100% earned \$1500 for 100 hours of experience
- 33% Indicated an interest in STEM Career
- 12% of Girls enrolled as Pre-health major
- 6% of Girls enrolled in Business/Accounting major



Women-led futures start today!

Ana Grande, Associate Executive Director
PF Bresee Foundation
agrande@bresee.org

Leah Hoogstra, M.S.



**Mathematics - M.S.,
Applied Mathematics**

*California Polytechnic State University
College of Science and Mathematics*

Background

- B.A. in Mathematics and International Development from Calvin University
- Worked in data analytics for seven years in research- and reporting-focused positions, both in the US and in the Middle East
- Volunteered with Django Girls, Code 4 Milwaukee, Zao MKE, and the Grand Rapids Pride Center, aiming to use technical skills to further the work of local nonprofits and to make STEM a more inclusive space for women and nonbinary individuals
- Professional and volunteer experiences have been incredibly valuable and clarified my decision to return to academia to pursue mathematical research



Leah Hoogstra
Selected Professions
Fellowship

Current Studies

Pursuing an M.S. in Mathematics
at Cal Poly State University.

Solidifying my foundation in
mathematics so I can go on to
do PhD work.

Plan to graduate with the Applied
Mathematics specialization in
Spring 2023.



Future Plans

PhD work...

I want to apply mathematical knowledge to issues of equality on topics such as gerrymandering, algorithmic fairness, or the better understanding of dynamic social systems.

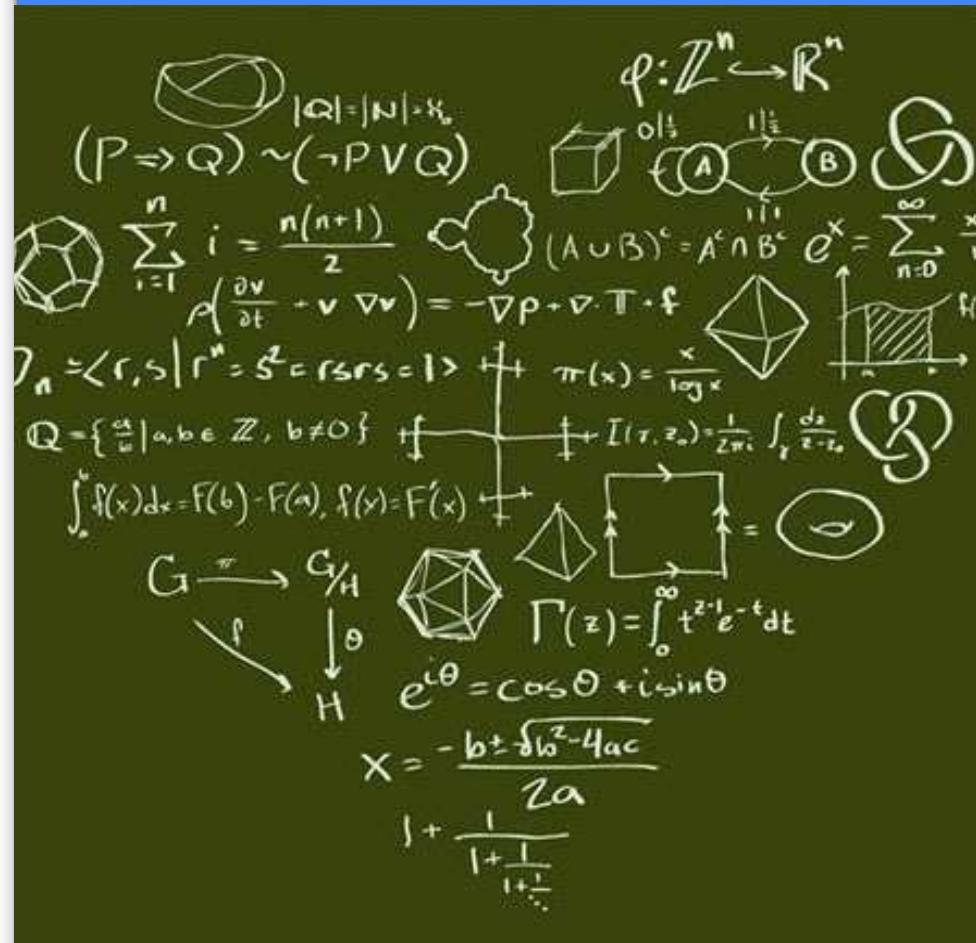
...and beyond.

Long term, I plan to seek a research and teaching position in mathematics. From that foundation I'll continue to research questions relevant to social systems, focusing especially on issues of equality.

I'll continue to work towards making mathematics a discipline where all are welcome, valued, and heard.

Thank you!

This grant made it possible for me to pursue graduate education.



Silvia Rodriguez Vega



Caged Childhoods: Art, Healing and U.S. Immigration Policy

*New York University
Chicanx/Latinx Studies*

Art & Creativity as Mitigation Strategies for Anti-Immigrant Policies

Silvia Rodriguez Vega, Ph.D.
Provost's Postdoctoral Fellow
Department of Applied Psychology

Immigration Policies Quickly Becoming More Hostile and Restrictive



[Home](#) » [Research](#)

REPORTS

“Adolescence is a critical period of life in which young people develop their social, cultural, and political identities, and become more aware of how society’s structures and institutions can affect them and their families. Many Latinx youth worry about the arrest and deportation of a relative, fellow student, or friend. Those who were born outside the United States and lack legal immigration status may also be at risk of deportation themselves. **These fears are linked to mental-health conditions and hold potential consequences for a young person’s school engagement, academic achievement, and future labor market outcomes.**”

Immigration Latino

By Randy Caprio

Education K-12

State & Local Enforcement



Immigration Enforcement
Health of Latinx Youth

Report
by Randy Caprio
with Michael
Rios, PhD

Immigration enforcement is



[see less -](#)

erged and
:S,
ties across
population

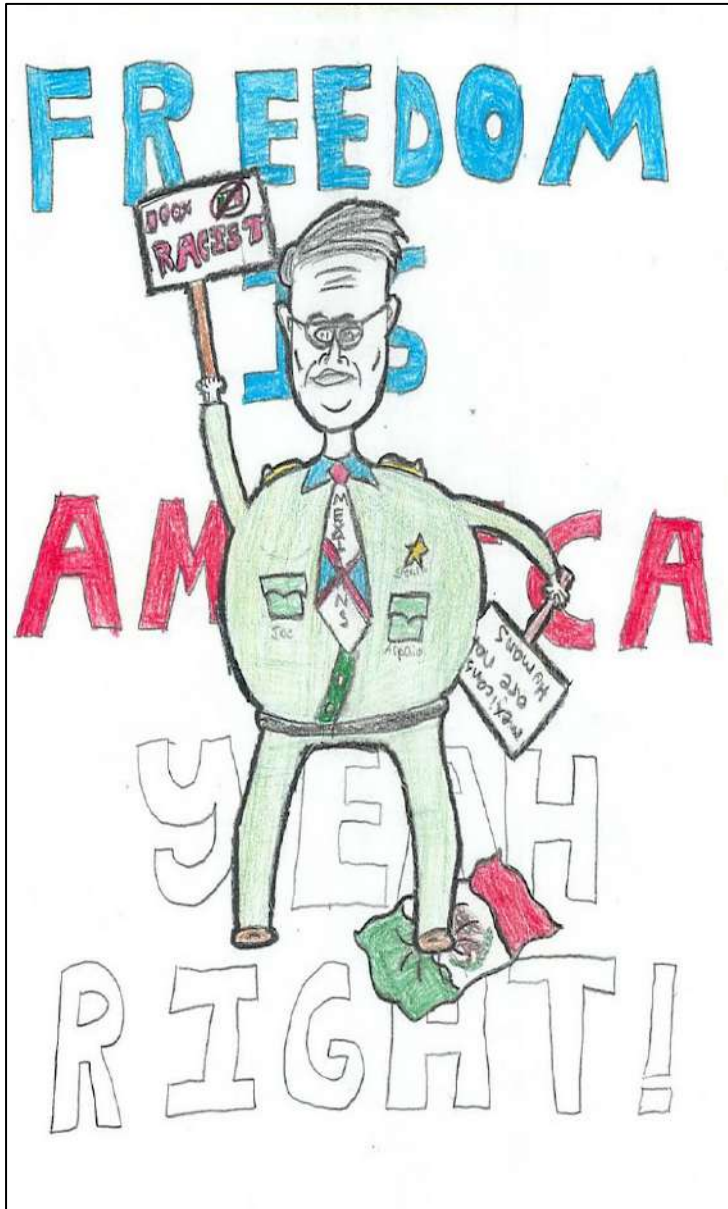
What can art offer in difficult moments?

Children and adolescents can:

- Externalize** their emotions/worries.
- REIMAGINE** difficult situations.
- Question** injustice in society.
- Develop **Resilience**.

This work is based on the last 12 years of research in border states, where I have conducted studies with 8-17 year olds in afterschool art camps in Arizona and designed and taught a bilingual theater class for 6th graders in California.

Externalize Emotions & Worries



"In Arizona the Sheriff, Joe Arpaio, arrest any person that looks Mexican no matter if they are U.S. citizens or not. He sends them to jail where they get beat up and treated like animals...That leaves kids alone in the U.S.A. away from their parents (to) get adopted by a family member if lucky."

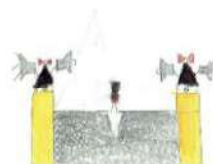
-Omar 12 years old, Mexican in AZ

Reimagine Through Theater



"I was so happy that my cousin Alex was coming to the US, but he actually died in the desert...I guess of starvation or thirst. I don't know. We did not know anything about my cousin until we saw on the news that his body was found on the border." -Erick, 12

Los Niños Inmigrantes

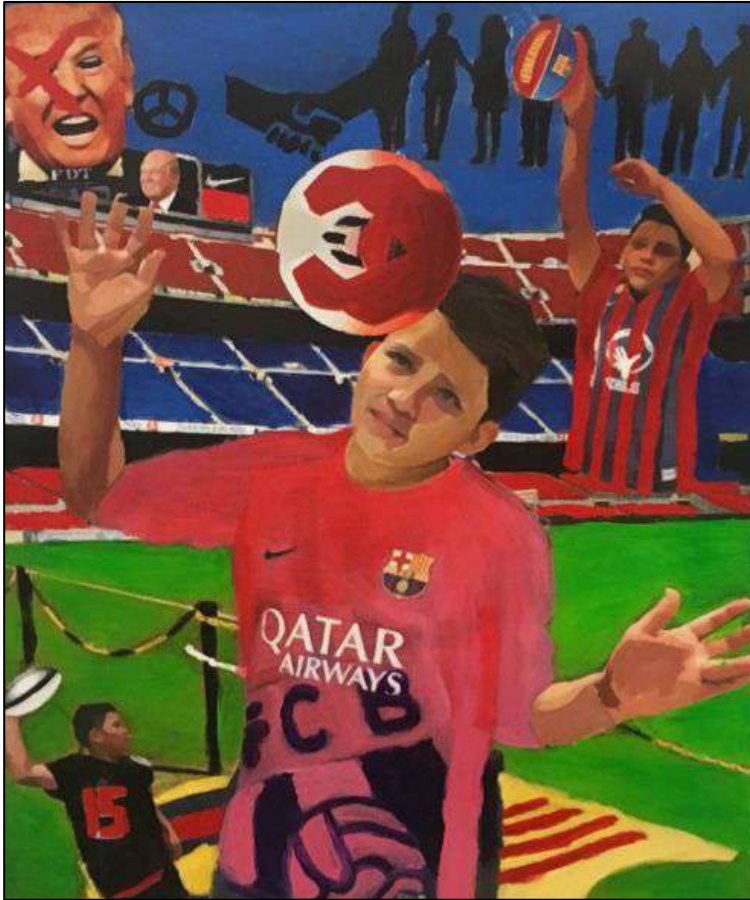


Question Injustice



Ana 16 years old,
Mexican in AZ

Develop **Resilience**



"I put Donald Trump, and I put the peace sign, and I put people agreeing. Agreeing with each other. So I want Donald Trump to make peace. And to not report immigrants no more and stop being racist."

-Diego 13, El Salvador in CA

Other Methods & Avenues to Consider

- (YPAR) Youth Participatory Action Research
- Community-Based Art Programs
- Partnerships with teaching artists and non-profit organizations

Thank you!

Legacy Circle

Charmen Goehring

Mooneen Lecce Giving Circle

For information contact Sharon Schuster at:
sharon@schuster.org 818 888-1376

AAUW Fund Chair Board Secretary

Lynne Batchelor

Next Steps

- Make a fund donation
 - Deadline - December 31, 2021
- Identify Named Gift Honorees
 - Branch named gift honoree application: Deadline - March 1, 2022
 - State named gift honoree application: Deadline - February 15, 2022
- Register for the next Fund Event
 - Sunday, November 7, 2021 (1-3 pm)
- View biographies and request a grant/fellow to speak at a branch or IBC meeting.

<https://www.aauw-ca.org/category/aauw-fund-internal/>



Make a donation to AAUW Fund and note that it is
“In honor of AAUW California Fund Event.”